



COVID-19 PRODUCT CATALOGUE

“ALWAYS ONE STEP AHEAD OF OUR COMPETITORS.”

WHAT WE ARE DOING

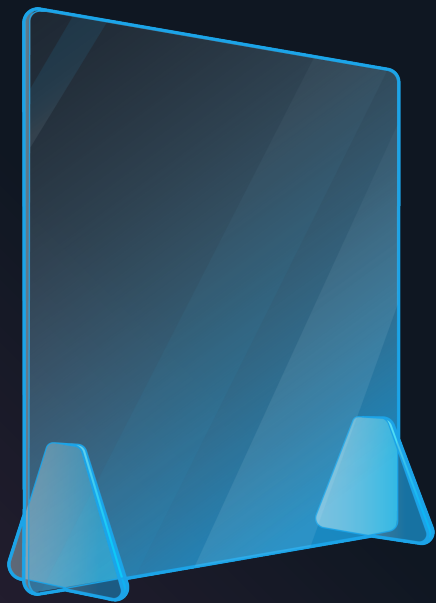
WE ARE HERE TO SUPPORT YOU!

With COVID-19 continuing to impact people and countries around the world, we are responding to the evolving Coronavirus (COVID-19) situation.

Our customers are at the heart of everything we do, so we are actively listening and responding to the shifting nature of their needs.

We have plans in place to ensure we continue to provide you – our customers and partners – with a seamless experience and the support you need and expect from us.

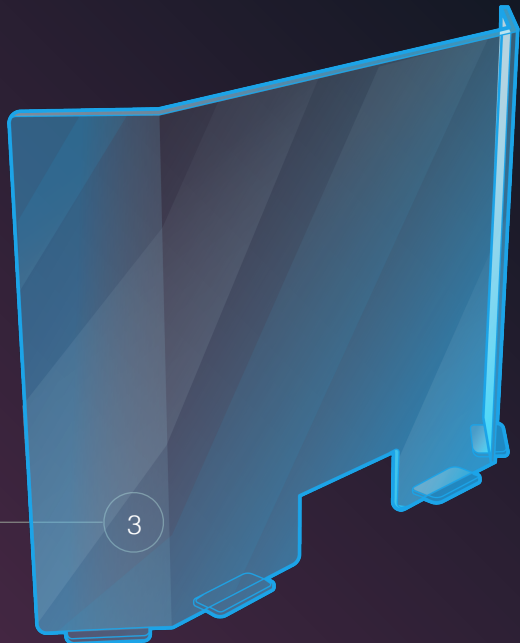




1. BRS 600
Size: 600mm X 600mm



2. BRS 800
Size: 800mm X 600mm



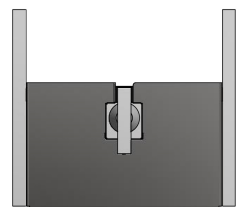
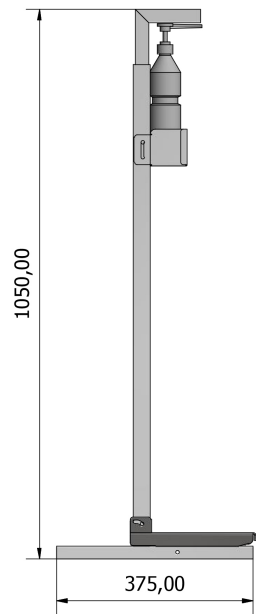
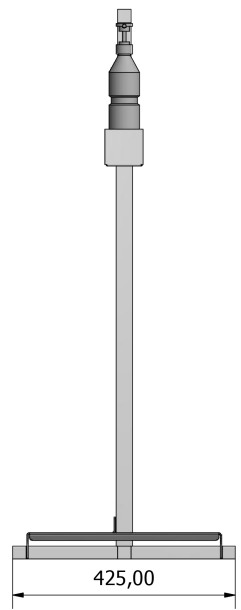
3. BRS 1200
Size: 800mm X 1200mm

COUGH & SNEEZE GUARDS

Based on the Covid-19 challenges we can create the perfect solution to suit your needs at all customer interaction points.

With our range of ready made and customized defenders we can assist to prevent the spread of the virus. These are vital for Customer interaction areas to protect employees especially at check-out counters, where they are dealing with a variety of customers one transaction after another all day long.

- 5mm Clear Acrylic
- Customized screens
- Counter top screens or ceiling suspended screens
- Customer Interaction Points such as: POS Counters | Checkout Points | Security Points | Dispatch Area | Receptions | Office Dividers



FOOT PUMP SANITIZER #1

Hand-Less contact sanitizer

- Designed for use in wet or dry environments.
- Mild Steel dispenser
- This dispenser accommodates 1l / 500ml sanitizer bottle
- Easy to replace bottle
- Durability and functionality for any industrial environment
- 1l bottle included
- Sanitizer not included
- Liquid or Gel can be used
- Colour – Silver (Powdercoated)
- Branding – Additional

FOOT PUMP SANITIZER #2

Hand-Less contact sanitizer

- Designed for use in wet or dry environments
- Mild Steel dispenser
- This dispenser accommodates 1l sanitizer bottle
- Easy to replace bottle
- Durability and functionality for any industrial environment
- 1l bottle included
- Sanitizer not included
- Liquid or Gel can be used
- Colour – Charcoal (Powdercoated)



WALL MOUNTED SANITIZER DISPENSER

Hand-Less contact sanitizer

- Mounted to the wall
- 1,6mm Mild Steel dispenser
- This dispenser accommodates 1l sanitizer bottle
- Easy to replace bottle
- Durability and functionality for any environment
- 1l bottle included
- Sanitizer not included
- Liquid or Gel can be used
- Colour – White & Grey (Powdercoated)



C. CANVAS MATERIAL –
FLEXIBLE CANVAS WHICH
IS TOUGH AND TEAR
RESISTANT

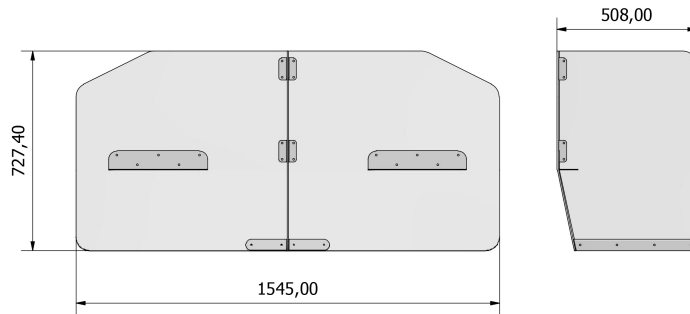
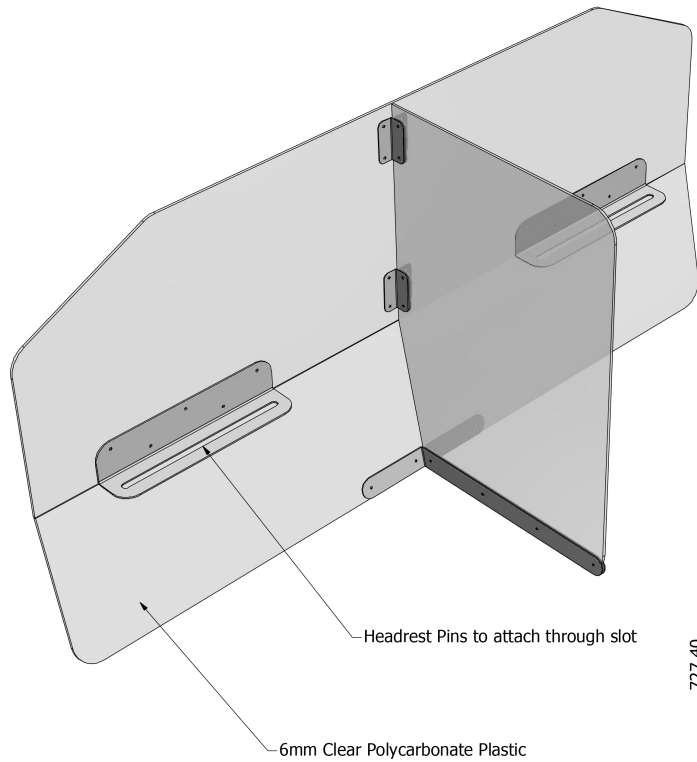
GOLF CART SCREEN

FLEXIBLE SCREEN BETWEEN CART DRIVER AND
PASSENGER

- Flexible PVC
- Most flexible all-round solution
- Pre-Packed self installation
- Customized to fit any model golf cart
- 6,5mm Stretch cord to fasten screen



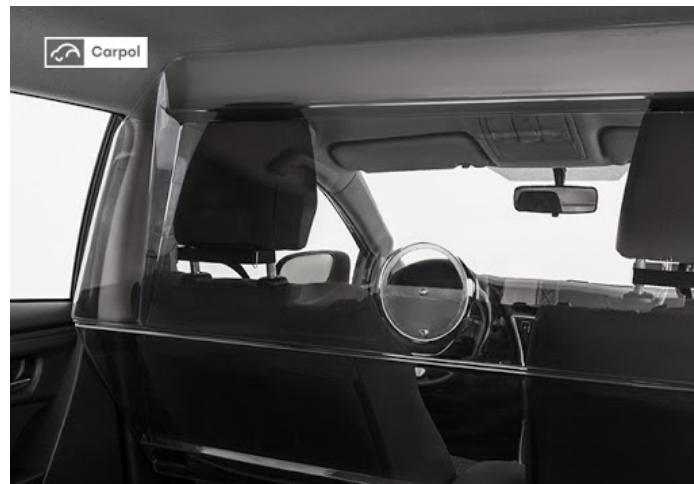
B. FLEXIBLE UV-
STABILISED CLEAR
MARINE GRADED PVC



QUANTUM TAXI/ SEDAN TAXI

SCREEN BETWEEN DRIVER AND FRONT PASSENGER, & SCREEN BETWEEN FRONT OF TAXI AND BACK PASSENGERS

- 6mm Clear polycarbonate plastic
- Attached to back of front seats
- Screen between driver and passenger
- Screen between front of taxi and back passengers
- Customized to suit Hiace/Uber sedan

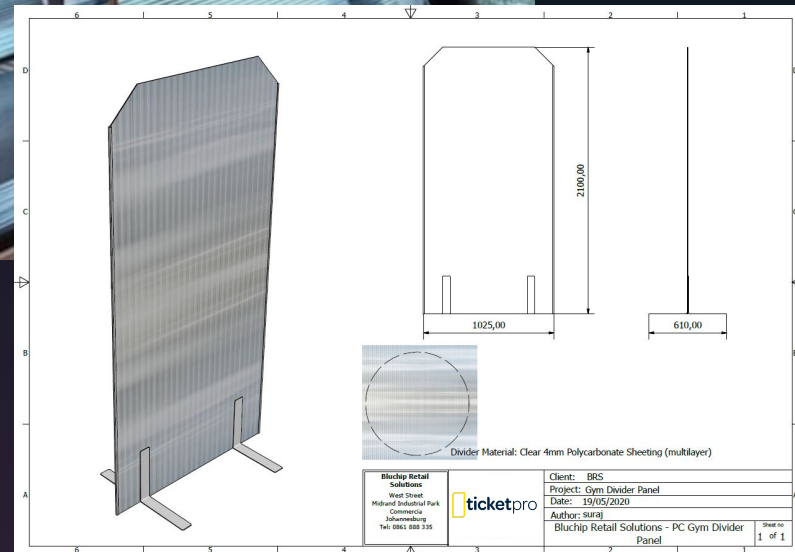


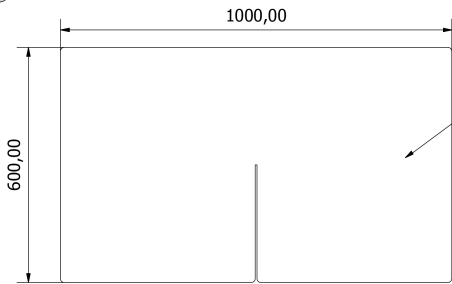
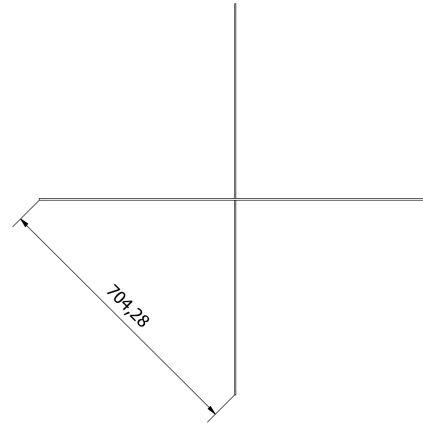
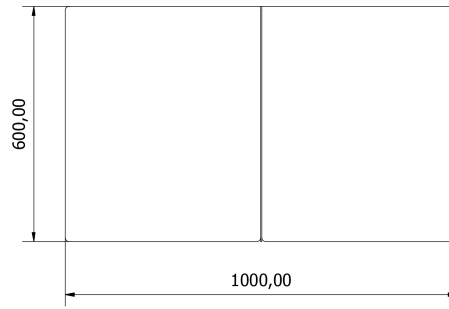
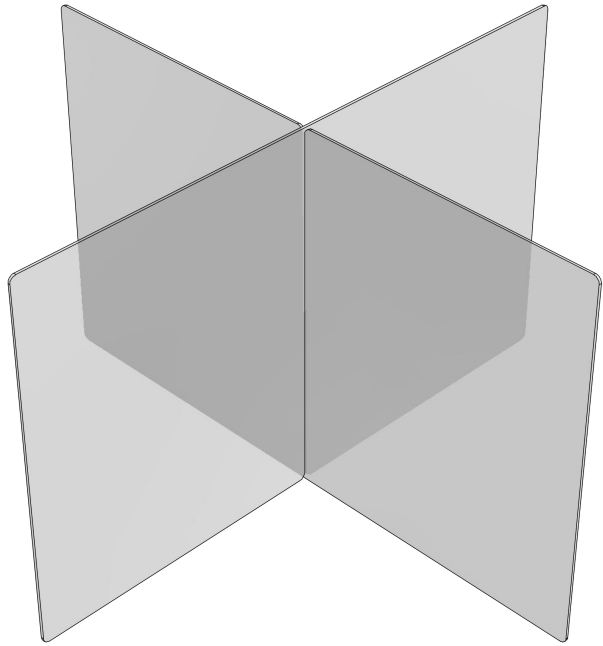
POLYCARB DIVIDERS

Based on the Covid-19 challenges we can create the perfect solution to suit your needs at all customer interaction points.

With our range of ready made and customized defenders we can assist to prevent the spread of the virus.

- 4mm Clear Polycarbonate sheeting (multi layered)
- We can customize screens to any sizing
- Ideal for gyms between equipment and in changing areas





Unit is Flat Packable and easily assembled
4mm UHI Clear



RESTAURANT TABLE SCREENS

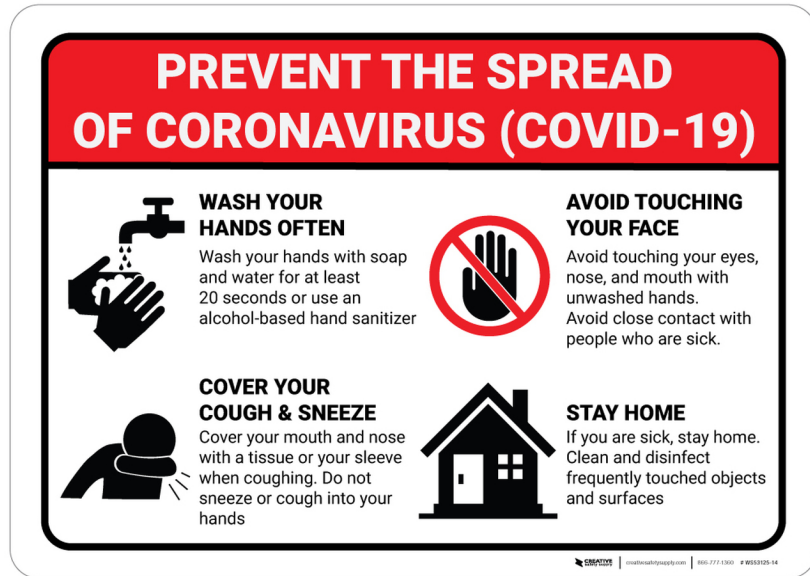
RESTAURANT TABLE SCREEN – 4 SEATER
CUSTOMIZED FOR BIGGER TABLES

- 4mm Clear polycarbonate plastic
- Flat packable
- Easy to assemble
- Customize to suit restaurant



SOCIAL DISTANCING STICKERS

Size: 200x800mm



2. AWARENESS POSTERS

Size: 840x595mm

POSTERS & FLOOR DECALS

SOCIAL DISTANCING FLOOR GRAPHICS AND AWARENESS POSTERS

- Available in variety of colours
- Standard range readily available
- Customize to suit your brand
- Cost Effective
- Durable



3. SOCIAL DISTANCING FLOOR DECALS

600mm

400mm



DOOR OPENER

Opening doors one step at a time

Foot operated door opener that works on any latchless commercial wood or metal door

- Eliminates the spread of germs
- Prevent cross-contamination, reduce costs
- Open the door with your foot
- Increase accessibility in your facility

3mm Mild Steel - Sprayed

3mm Stainless Steel



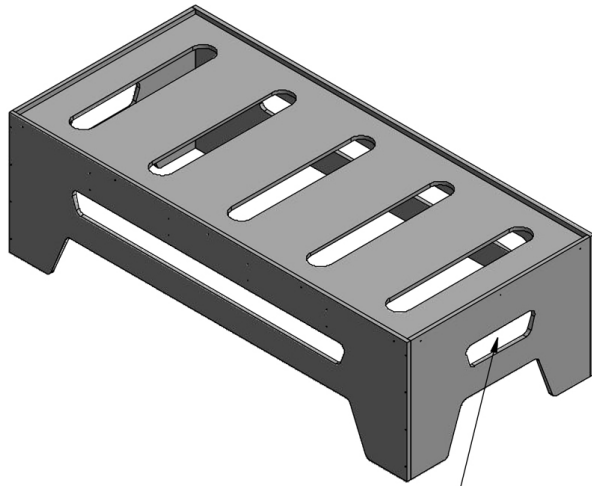


SANITIZERS

Classic Guard Waterless Hand Sanitizer

- Home, Industrial and professional use
- Hand and Surface Sanitizer

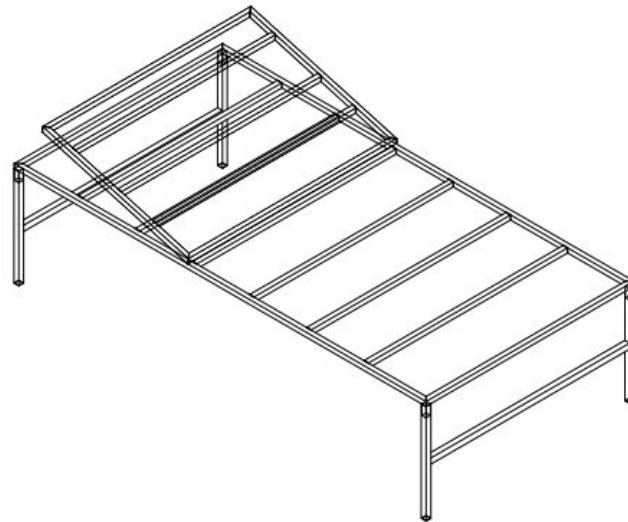




Cutouts for future/ possible patient chart caddy hanging

1. WOODEN HOSPITAL BED

- Dimensions: 925mm x 1977mm x 600mm high
- Flat pack & easy to assemble
- 16mm MDF (Raw finish)
- Adjustable
- Low Weight – Easy Handling
- Suitable for any mattress up to 19cm thick
- Excluding Mattress



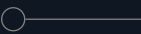
2. STEEL HOSPITAL BED - INCLINED

- Dimensions: 910mm x 1880mm x 600mm high
- 25mm Steel tubing
- Powder Coated
- Colour Range: Black, White & Cream
- Adjustable back rest
- Rubber feet. Castors are optional.
- Flat Option available

HOSPITAL BEDS

With the current Hospital beds shortage in SA for very ill Covid-19 patients we need to be prepared.

SA is not equipped to deal with a sudden surge in the number of patients requiring acute care, so we have come up with an affordable quick manufacturing solution.



CONTACT:

Vernon - 083 378 1534 / VernonL@blts.co.za

www.ticketpro.co.za